



# *Live Well San Diego: A Local Approach to an Human-Serving Ecosystem*

**Nick Macchione, MS, MPH, FACHE**  
Agency Director  
Health and Human Services Agency  
County of San Diego, CA

---

*2017 Health and Human Services Summit:  
Creating a Culture of Outcomes and Impact  
Harvard University, Cambridge, MA  
September 24, 2017*



# SAN DIEGO COUNTY



San Diego County is:

### Diverse

Urban

Suburban

Rural

Agricultural

Source: [County of San Diego. \(n.d.\).](#)

### Geographically Unique

Military Base

Ocean

Desert and Mountains

Mexico

Source: [County of San Diego. \(n.d.\).](#)

*Over 3.3 million residents*

## Large

**4,200 square miles, about the same size as Connecticut**

Source: [U.S. Census Bureau](#)



# COUNTY OF SAN DIEGO HEALTH & HUMAN SERVICES AGENCY



- Mission is to make people's lives healthier, safer and self-sufficient by delivering essential services
- Values are integrity, stewardship and commitment
- Provide vital health and and social services to San Diego County's 3.3 million residents, and 1.1 million customers.
- Hub and spokes for safety net and large scale population improvements
- From institution-based initiatives to communitywide social movement



## LIVE WELL SAN DIEGO

*San Diegans helping San Diegans Live Well*

# ACTION FRAMEWORK



## 1 VISION

of a  
Region  
that is

Building  
Better  
Health

Living  
Safely

Thriving

## 4 STRATEGIC APPROACHES

Building a  
Better Service  
Delivery  
System



Supporting  
Positive  
Choices



Pursuing  
Policy &  
Environmental  
Changes



Improving  
the  
Culture  
Within



## 5 AREAS OF INFLUENCE



HEALTH



KNOWLEDGE



STANDARD OF  
LIVING



COMMUNITY



SOCIAL

## TOP 10 LIVE WELL SAN DIEGO INDICATORS

Life  
Expectancy  
Quality of Life

Education

Unemployment  
Rate  
Income

Security  
Physical  
Environment  
Built Environment

Vulnerable  
Populations  
Community  
Involvement

that measure the impact of collective actions by partners and the County to achieve the vision of a region that is Building Better Health, Living Safely and Thriving.

# AREAS OF INFLUENCE



LIVE WELL  
SAN DIEGO

# SAN DIEGO COUNTY'S JOURNEY TO THE GENERATIVE MODEL IN LIVING WELL

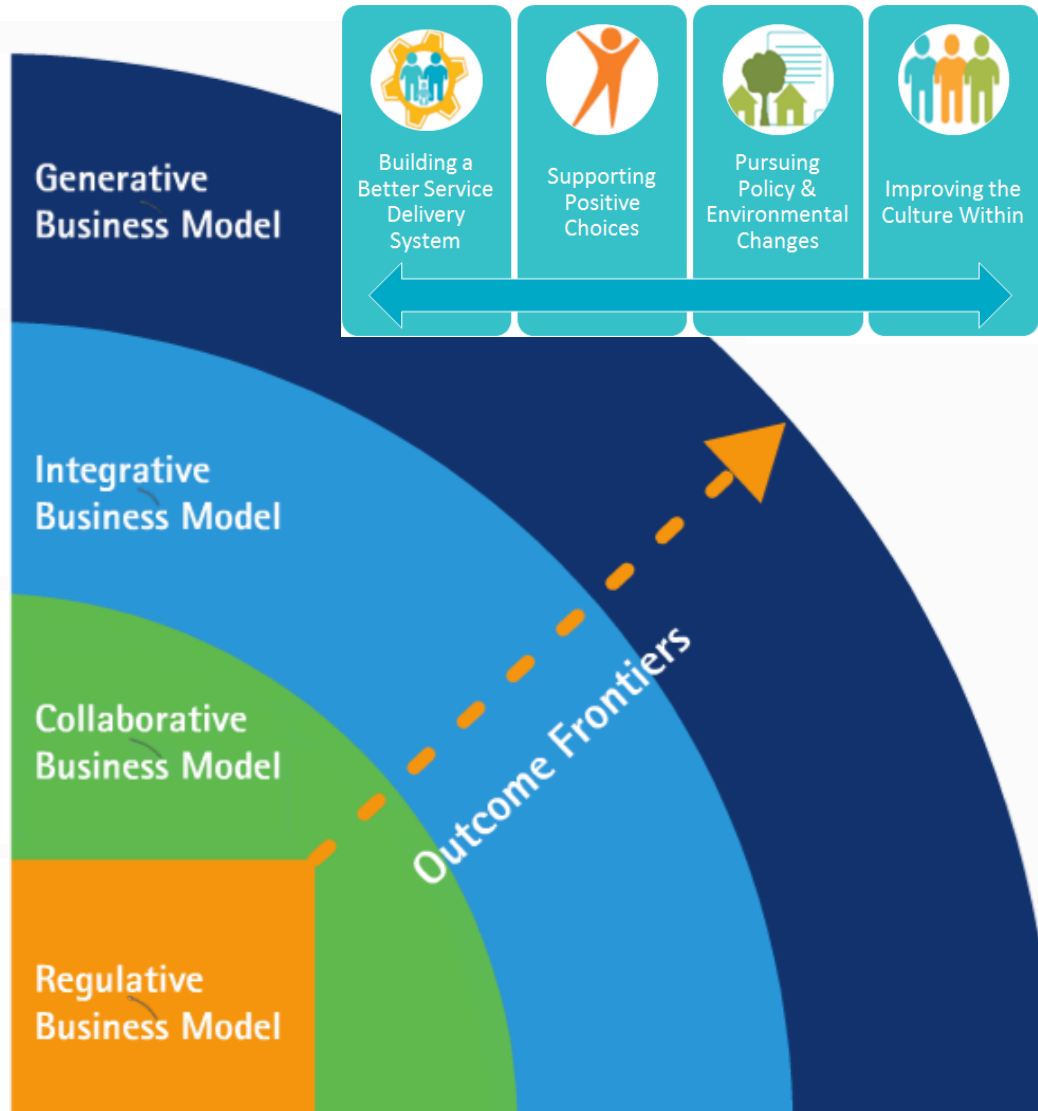


Today  
*Live Well San Diego*  
Becomes County  
Vision;  
316+ Community  
Partners and  
growing

2010-2014  
*Live Well San*  
*Diego Initiative*  
Implemented

1998  
*Health and Human*  
*Services Agency*  
was formed

1996  
*County's General*  
*Management*  
*System*  
Introduced



- Beginning in 1996 with the adoption of core business principles by County government.
- Moving to the Collaborative Model in 1998 with formation of the Health and Human Services Agency.
- *Live Well San Diego* as an initiative moved first the Health and Human Services Agency and then the County to the Integrative Model culminating in adoption of *Live Well San Diego* as the County's vision and focus for strategic alignment of its resources and recognition of 125 community partners that have adopted the *Live Well San Diego* vision to align Collective Impact efforts.

# COUNTY of SAN DIEGO's ANNUAL OPERATIONAL PLAN



Strategic Initiatives  
 Building Better Health  
 Living Safely and Thriving  
 Sustainable Environments  
 Operational Excellence

## Live Well San Diego

**Vision: A region that is Building Better Health, Living Safely and Thriving**

The County of San Diego is a rich tapestry of many threads and colors - from our beautiful beaches to our hills, deserts and mountains. We live in a diverse area of the world. Yet some residents face challenges when it comes to their health, their safety and their well-being.

The County of San Diego uses its strategic initiatives - Healthy Families, Safe Communities, Sustainable Environments and Operational Excellence - to deliver services that improve residents' lives. But the County wanted to do even more - create the highest quality of life possible for all of its residents.

*Live Well San Diego* was born. The San Diego County Board of Supervisors adopted *Live Well San Diego* as a regional initiative in 2010. The Building Better Health component of the initiative was adopted on July 13, 2010, and is focused on improving the health of residents and supporting healthy choices. Living Safely was adopted on October 9, 2012, and is aimed at protecting residents from crime and abuse, making neighborhoods safe, and supporting resilient communities. Thriving was adopted on October 21, 2014, and is designed to give people a chance to grow, connect and enjoy the highest quality of life through the natural and built environment, enrichment activities and civic engagement, education and economic prosperity. *Live Well San Diego* has evolved from a 10-year initiative to become the County's vision.



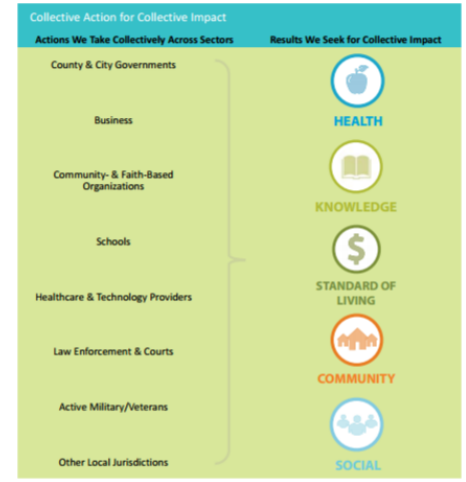
## LIVE WELL SAN DIEGO

### Areas of Influence and Live Well San Diego Indicators

*Live Well San Diego* is a shared vision, and using a shared measurement system allows all partners to focus collective efforts and track collective progress. The 5 Areas of Influence and the Top 10 Indicators are the result of this process.

### Collective Action for Collective Impact

*Live Well San Diego* is a shared vision, and using a shared measurement system allows all partners to focus collective efforts and track collective progress. Collective action involves every sector and every resident, which is why we strive to connect organizations of every kind—cities and governments, diverse businesses including healthcare and technology, military and veterans organizations, schools, and community- and faith-based organizations—through a shared purpose. Collective impact is where everyone does what they do best with the goal of impacting the 5 Areas of Influence and, consequently, achieving the results we seek as captured through the Top 10 Indicators.

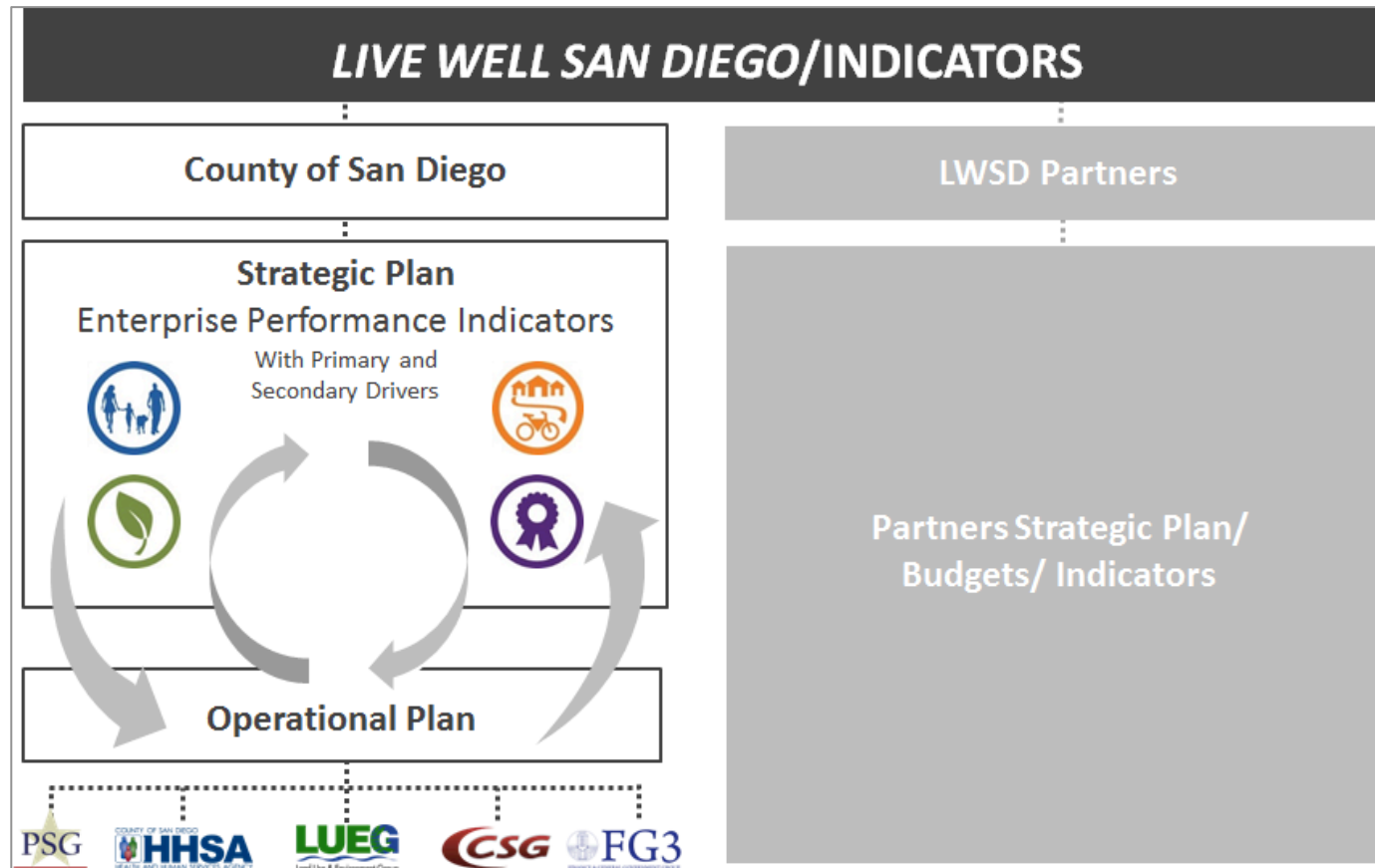


The County recognizes that as a result, the first *Live Well San Diego* partners—cities and governments, diverse businesses including healthcare and technology, military and veterans organizations, schools, and community- and faith-based organizations—and that we can promote health and safety and thriving.

# STRATEGIC ALIGNMENT



- 2015 - Major Update to Strategic Plan
- 2016 – Update Performance Measure Tables
- 2017 – Develop Enterprise Performance Indicators (EPIs)
- 2018 – Develop Outcome-Based Performance Measures





# ENTERPRISE PERFORMANCE INDICATORS



## Building Better Health (BBH)

- Life Expectancy
- Healthy Independence



## Living Safely (LS)

- Crime Rate
- Accidental Death Rate
- Household Disaster Preparedness
- TBD (at-risk children, youth and adults)



## Sustainable Environments/ Thriving (SE/T)

- Transportation
- Access to Community Spaces
- Air Quality
- Open Space Preservation
- Housing Affordability
- Confidence in Goods and Services (Consumer Confidence)
- Volunteerism & Community Participation



## Operational Excellence (OE)

- Customer Service
- Fiscal Stability as measured by the County's Credit Rating
- Employee Engagement

# VERTICAL AND HORIZONTAL NETWORKS



## SUSTAINABLE ENVIRONMENTS/ THRIVING (SE/T)

### Audacious Vision (AV8)

San Diego is a vibrant region with planning, development, infrastructure and services that strengthen the local economy

### Enterprise Performance Indicator (EPI)

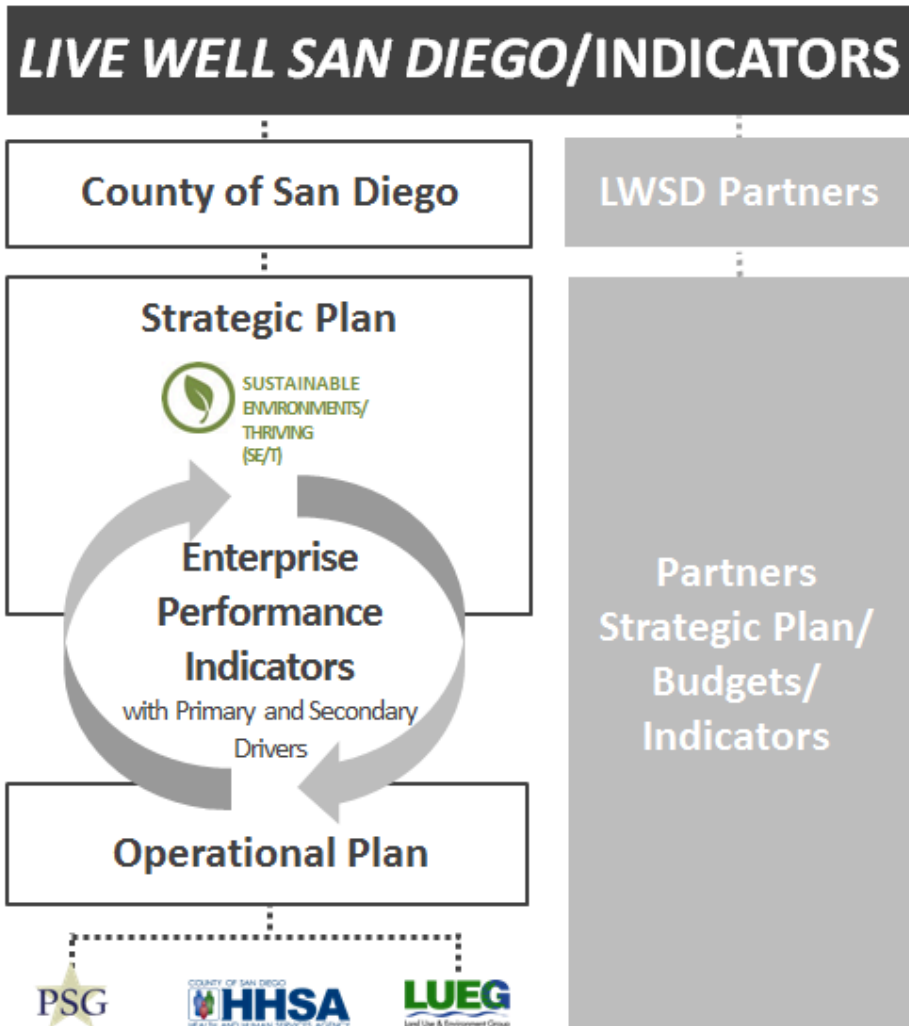
Economic Wellbeing as measured by Housing Affordability – Percent of the population spending less than a third of household income on housing

### Enterprise Wide Goal (EWG10)

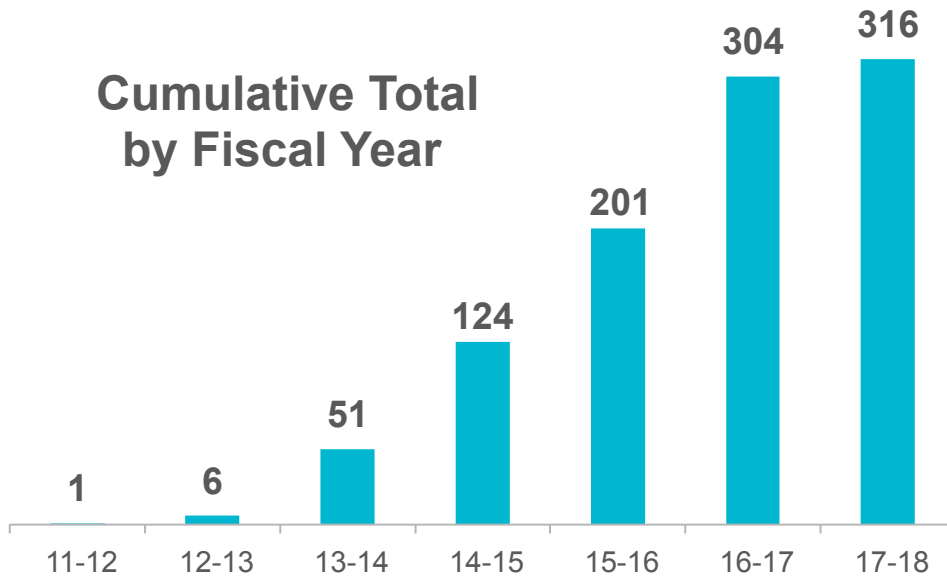
Provide and promote services that increase well-being of our residents and consumer and business confidence

### Department Performance Measure(s):

- **PSG** – CSS  
Income: Child Support helps ensure children and families are supported
- HHSA** – HCDS  
New housing units built
- LUEG** – PDS  
New housing units permits issued

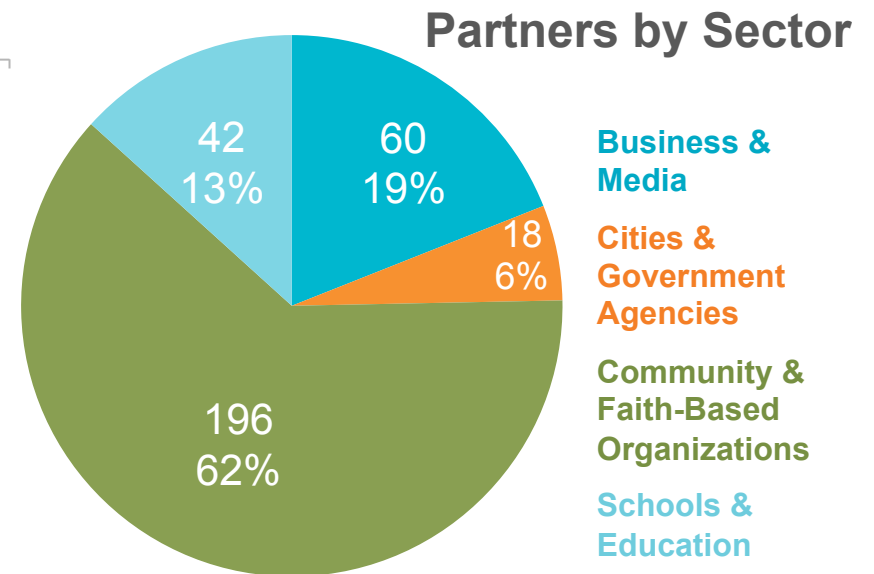


# RECOGNIZED PARTNERS

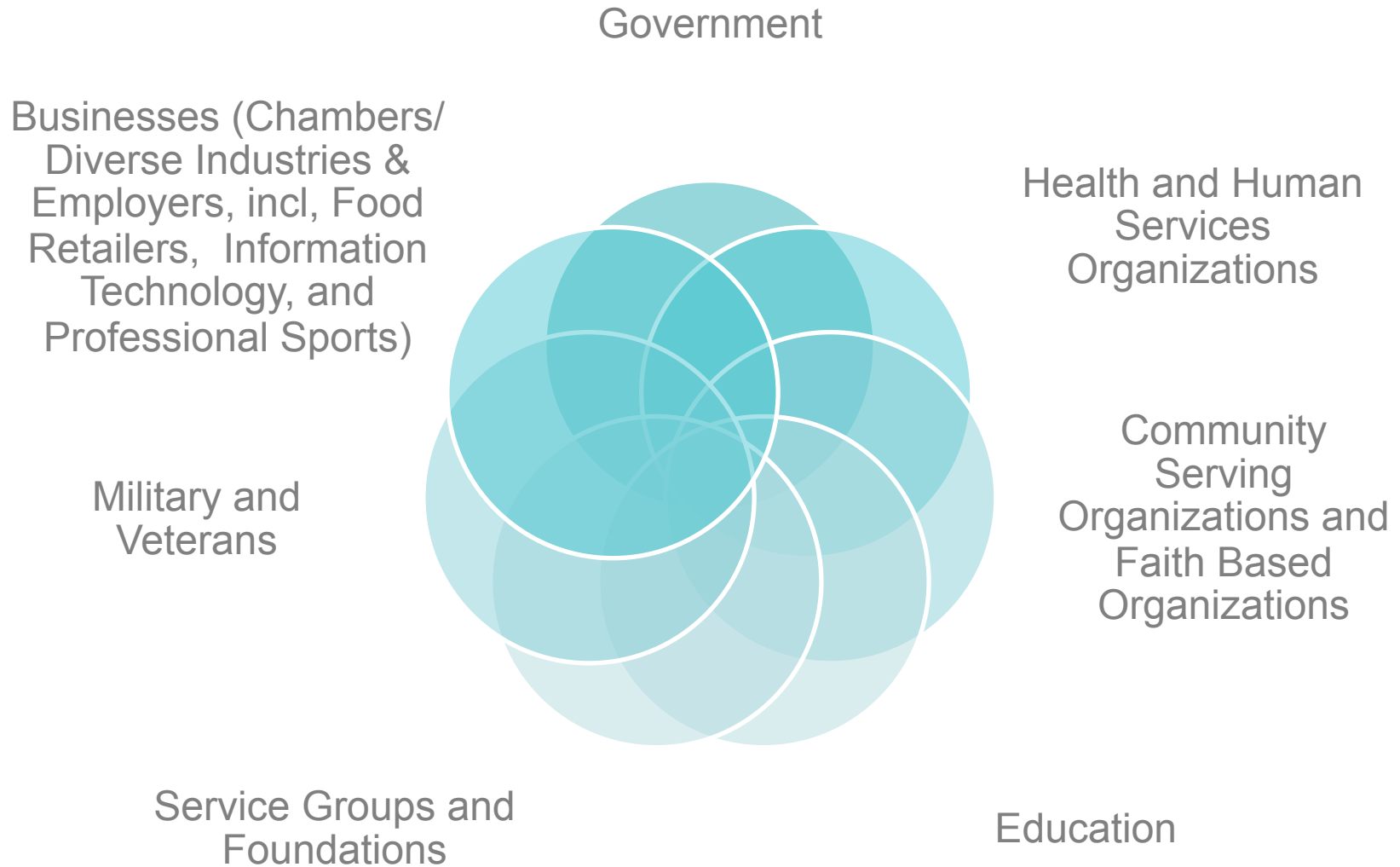


**316**  
**Recognized Partners**  
and 2 International Partners  
as of 9/18/2017

14 Cities - over 2.4 million Residents  
32 School Districts - nearly 430,000 Students



# PARTNERSHIPS and ECOSYSTEMS EFFORTS ARE DYNAMIC



# Generative Partnerships, Generative Governance Greater Outcomes for Living Well.



LIVE WELL  
SAN DIEGO

